

WATER RESOURCES SUMMARY

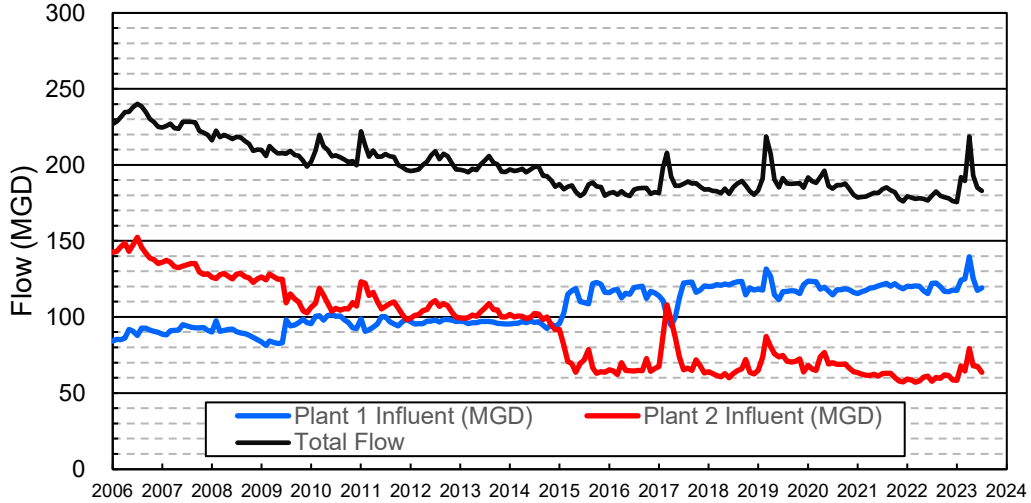
June 2023

INFLOWS & OUTFLOWS (acre-feet)	Total for Month	Year to Date - This Year Last Year	
BASIN SUPPLIES			
Water Purchases from MWD (excludes In Lieu)	0	16,864	22,982
Water into MWD Storage Account (excludes In Lieu)	0	0	0
SAR & Santiago Creek Flows (accounts for storage to/from recharge facilities)	19,415	312,821	127,168
GWRS Water to Forebay	7,994	74,624	60,774
GWRS Water to Mid-Basin Injection Wells	641	7,516	7,807
GWRS Water to Talbert Barrier	1,494	19,747	23,980
OC-44 and F. Valley Water to Talbert Barrier	1	25	14
Alamitos Barrier Water	150	2,354	2,704
Incidental Recharge (estimated)	5,000	60,900	20,449
Evaporation from Recharge Basins	(515)	(3,449)	(2,567)
River Flow Lost to Ocean	<u>0</u>	<u>(141,373)</u>	<u>(16,390)</u>
Total Groundwater Recharge	34,181	350,028	246,921
WATER PRODUCTION			
Groundwater Production	24,122	244,930	256,921
MWD Storage Program Withdrawals	<u>0</u>	<u>0</u>	<u>0</u>
Total Groundwater Production	24,122	244,930	256,921
BASIN BALANCE			
Change in Groundwater Storage	10,059	105,098	(10,000)
Change in Groundwater Storage excluding MWD Stored Water	10,059	105,098	(10,000)
Accumulated Overdraft	-----	152,904	258,003
Accumulated Overdraft excluding MWD Storage	-----	152,904	258,002
IN LIEU WATER			
OCWD In Lieu Purchases (MWD Cyclic Storage)	0	0	0
MWD In Lieu Storage	<u>0</u>	<u>0</u>	<u>0</u>
Total In Lieu	0	0	0
OTHER KEY INFORMATION			
1. MWD Water Deliveries to Producers	5,442	88,686	117,406
2. Basin Production Percentage	81.6%	73.4%	68.6%
3. Total Water Demand	31,456	353,603	396,193
4. Total GWRS Production	10,133	101,950	92,623
5. Green Acres Project Water	348	3,410	3,827
6. SAR Water Quality			
- Total Dissolved Solids (TDS) of SAR below Prado Dam (ppm)	656	-----	646
- Total Nitrogen of SAR below Prado Dam (ppm)	1.2	-----	3.9
7. Month-End Water Storage Behind Prado Dam	1	-----	0
8. Month-End Water Storage in Recharge Facilities	21,258	-----	10,876
9. Water Storage Change in Recharge Facilities	(2,522)	10,382	2,216
10. Total Artificial Recharge	29,181	289,128	226,472
11. Monthly Mean Temperature at Santa Ana Fire Station (°F)	67.5	-----	72.5
12. Rainfall at FHQ (inches)	0.11	25.74	6.91

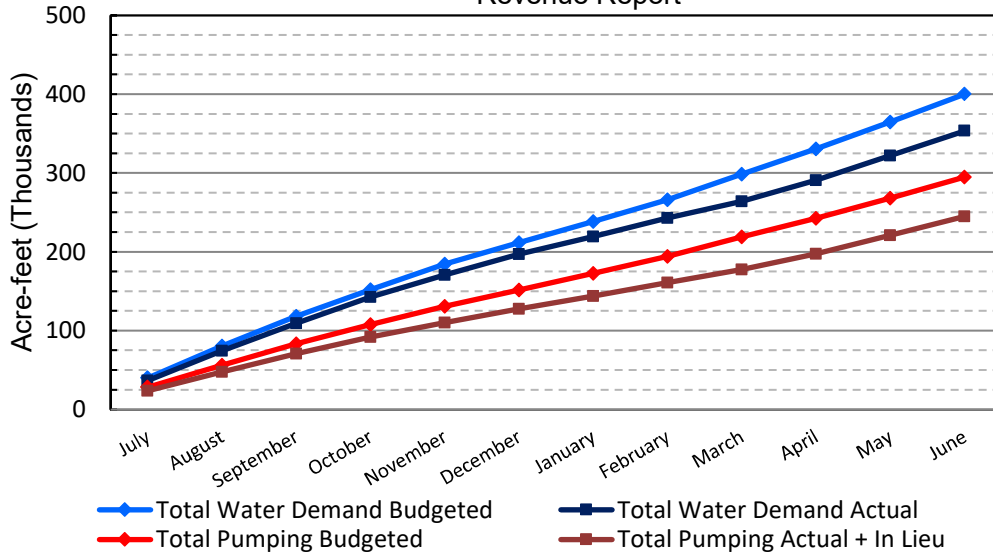
*** Note: Data are preliminary, subject to change

7/13/2023

Orange County Sanitation District Influent Flows Report

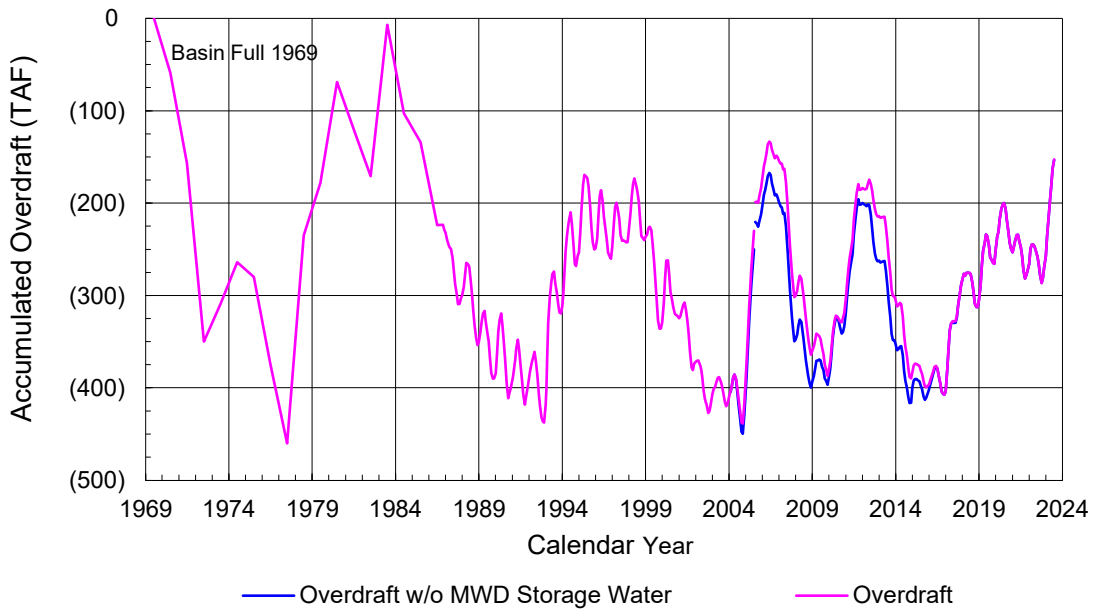


2022-23 Water Demands/Groundwater Pumping + In Lieu/RA Revenue Report

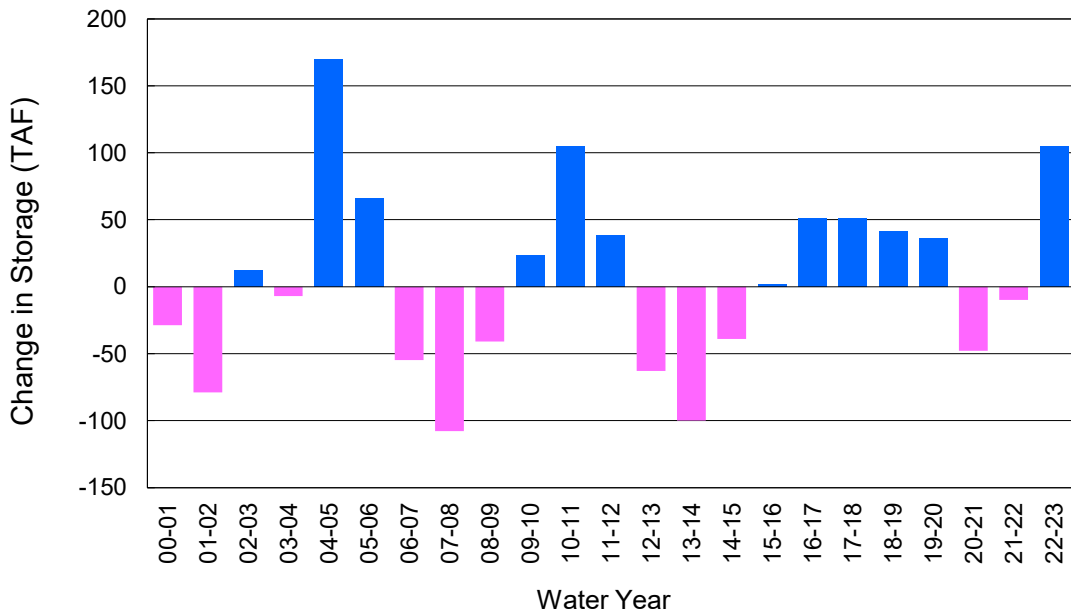


	Monthly		Accumulated Total for the Year			
	Budget	Actual	Budget	Actual	Difference	Percent
Total Water Demand	35,400	31,456	400,000	353,603	-46,397	88.40%
Total Pumping + In Lieu	27,100	24,122	295,000	244,930	-50,070	83.03%
RA Revenue	\$12,520,200	\$11,144,253	\$136,290,000	\$113,157,461	-\$23,132,539	83.03%

Accumulated Overdraft



YTD Change in Groundwater Storage in OCWD



PRODUCERS WATER USAGE SUMMARY

June 2023

(AF except BPP)

WATER AGENCY	Ground-water (1)	In Lieu	Reclaimed Water	Total Import (2)	Total Demand	2022-23 YTD Demand	2021-22 YTD Demand	YTD % Diff Demand	JUN 2023 BPP	2022-23 YTD BPP	2021-22 YTD BPP
Anaheim	2,052	0	0	2,378	4,429	51,966	59,255	88%	46.3%	29.6%	29.0%
Buena Park	932	0	0	87	1,019	11,759	13,187	89%	91.4%	88.9%	87.5%
East Orange County	0	0	0	72	72	757	906	84%	0.4%	0.4%	0.3%
Fountain Valley	712	0	94	0	805	8,720	10,214	85%	100.0%	100.0%	100.0%
Fullerton	1,292	0	0	469	1,761	20,523	23,738	86%	73.4%	75.4%	74.7%
Garden Grove	1,784	0	0	0	1,784	19,635	22,105	89%	100.0%	81.5%	76.0%
Golden State	1,003	0	0	768	1,771	19,982	23,192	86%	56.6%	57.0%	63.3%
West OC System	825	-	-	275	1,100	12,305	14,059	88%	na	na	na
East OC System	178	-	-	493	671	7,678	9,133	84%	na	na	na
Huntington Beach	1,771	0	0	327	2,098	23,361	26,350	89%	84.4%	68.9%	82.2%
Irvine Ranch	4,132	0	1,659	1	5,791	61,903	64,344	96%	100.0%	99.8%	98.6%
DRWF Clear	2,790	-	-	-	2,790	27,219	26,452	103%	na	na	na
DRWF Color	716	-	-	-	716	8,174	6,492	126%	na	na	na
Laguna Beach	0	0	0	264	264	2,981	3,350	na	0.0%	15.1%	0.0%
La Palma	142	0	0	0	142	1,614	1,708	95%	100.0%	99.7%	96.4%
Mesa Water (MW)	1,313	0	76	0	1,389	15,525	17,501	89%	100.0%	99.9%	98.7%
MW Clear	1,313	-	-	-	1,313	12,474	12,560	99%	na	na	na
MW Amber	0	-	-	-	0	2,305	3,766	61%	na	na	na
Newport Beach	1,184	0	45	0	1,229	13,240	14,667	90%	100.0%	82.7%	73.6%
Orange	1,476	0	0	371	1,846	22,720	26,529	86%	79.9%	80.9%	53.3%
OCWD (GAP)	188	0	0	0	188	1,550	1,575	98%	100.0%	100.0%	100.0%
Santa Ana	2,396	0	18	241	2,655	30,704	33,207	92%	90.9%	74.1%	76.8%
Seal Beach	234	0	0	1	235	2,751	3,363	82%	99.6%	78.4%	81.8%
Serrano	163	0	0	38	202	2,534	2,843	89%	81.0%	63.0%	34.0%
Tustin	616	0	0	239	855	9,571	10,929	88%	72.1%	55.3%	55.5%
Westminster	860	0	0	0	860	9,718	10,811	90%	100.0%	97.8%	100.0%
Yorba Linda	<u>1,336</u>	<u>0</u>	<u>0</u>	<u>181</u>	<u>1,517</u>	<u>16,511</u>	<u>19,894</u>	<u>83%</u>	<u>88.1%</u>	<u>86.1%</u>	<u>35.8%</u>
SUBTOTAL:	23,584	0	1,892	5,435	30,911	348,026	389,669	89%	81.6%	73.4%	68.6%
Other Producers (Est ~3% of Subtotal)	<u>538</u>	<u>0</u>	<u>0</u>	<u>7</u>	<u>545</u>	<u>5,577</u>	<u>6,524</u>	<u>85%</u>			
TOTAL:	24,122	0	1,892	5,442	31,456	353,603	396,193		81.6%	73.4%	68.6%
OCWD (Talbert Barrier)	0		1,494	0	1,494	19,772	23,994				
OCSA (GAP)	na		115	na	115	1,136	590				

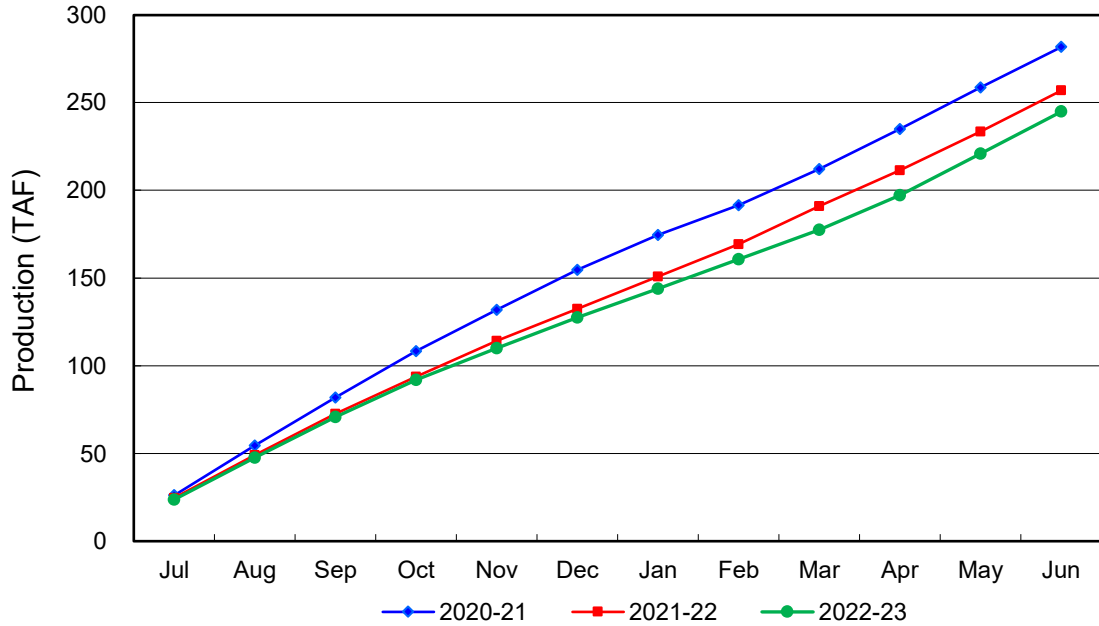
Estimated

(1) Excludes MWD CUP Withdrawals

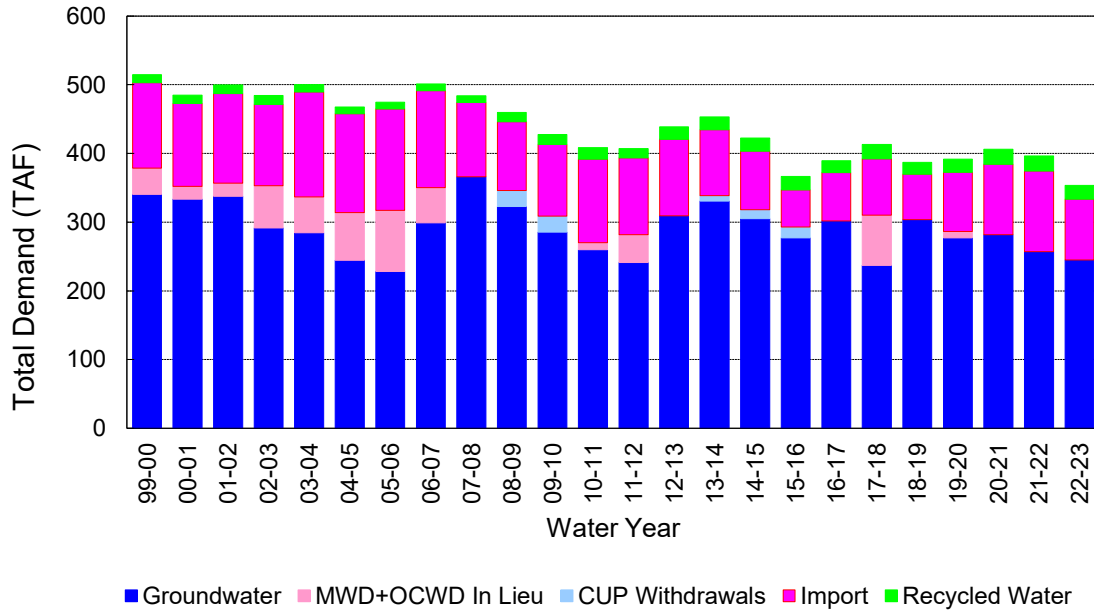
(2) Includes MWD CUP Withdrawals & In Lieu Water

7/13/2023 14:14

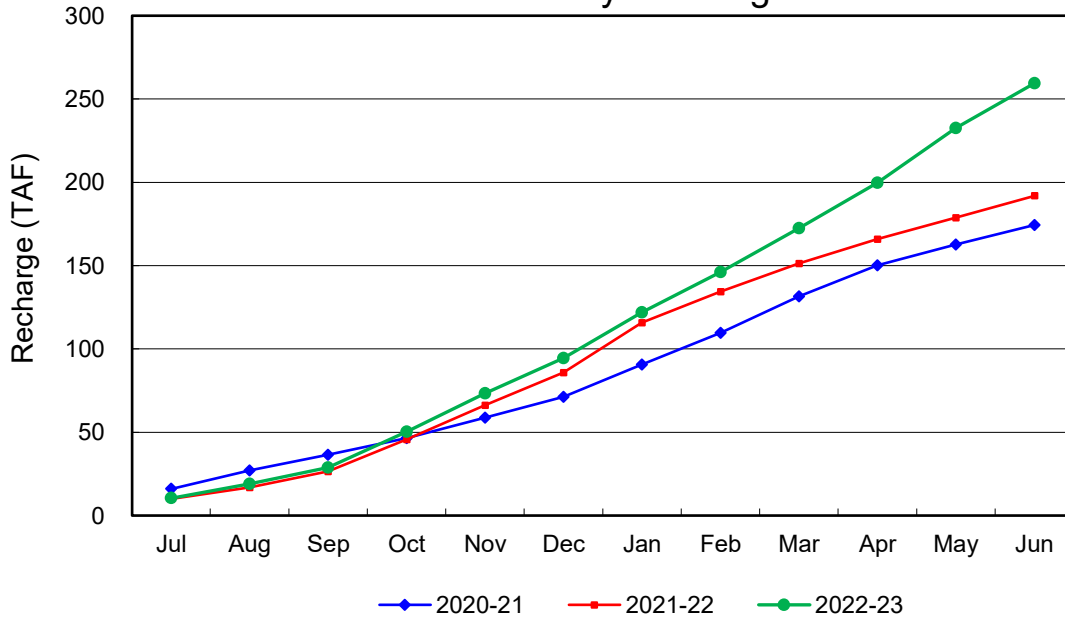
Annual Groundwater Production



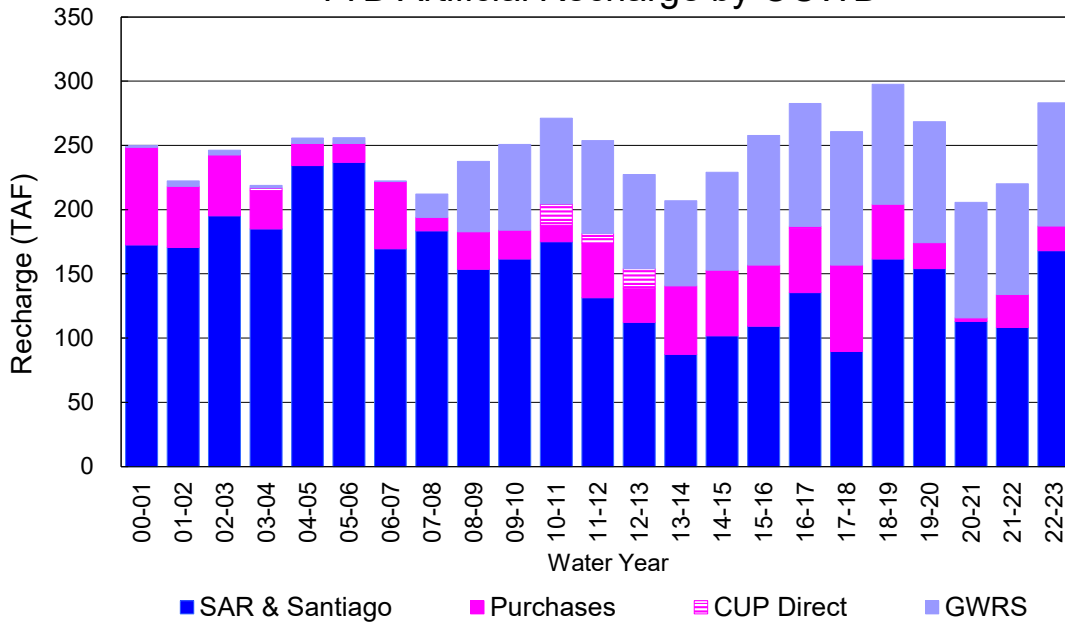
YTD Total Demand in OCWD



Annual Forebay Recharge



YTD Artificial Recharge by OCWD



RECHARGE AREAS REPORT

June 2023

	Percolation (AF)	Remarks
RIVER SYSTEM	6,961	117 cfs per day average perc
DESILTING SYSTEM	na	SAR
OFF-RIVER SYSTEM	190	SAR
WARNER SYSTEM	883	SAR
OLIVE BASIN	na	Passive System
ANAHEIM LAKE	1,210	SAR
MINI-ANA LAKE	368	SAR
MILLER BASIN	278	SAR
KRAEMER BASIN	1,087	GWRS, SAR
LA PALMA BASIN	5,295	GWRS
MIRA LOMA	2,200	GWRS
LA JOLLA BASIN	412	SAR
PLACENTIA BASIN	na	
RAYMOND BASIN	254	SAR
FIVE COVES BASIN	na	SAR
BURRIS BASIN	1,798	SAR
RIVER VIEW BASIN	246	SAR, Burris Pumping
FLETCHER BASIN	94	SAR, Burris Pumping
SANTIAGO BASINS	5,495	SAR, Burris Pumping
SANTIAGO CREEK	127	SAR, Burris Pumping
TOTALS	26,898	
5-YR AVERAGE	18,370	

FLOWS TO RECHARGE AREAS (AF)	
Imperial Headgates (estimated)	16,755
GWRS	7,997
OC-28 (MWD)	0
OC-28a (MWD)	0
OC-59	0
Est'd local Forebay inflow below Imperial	0
Est'd local Santiago inflow (estimated)	129
Irvine lake releases (OC-13 MWD)	0
Villa Park Dam releases (estimated)	0
Precip at Warner Basin (inches)	0.11
Precip direct to open water surfaces	9
TOTAL INFLOW	24,890

LOSSES FROM RECHARGE AREAS (AF)	
Est'd SAR flow past Chapman Ave.	0
Est'd Santiago Cr. flow to SAR	0
Est'd flows past Raymond Basin	0
Calc'd evap (inches) Estimated	6.27
Est'd evaporative losses	515
TOTAL LOSSES	515

STORAGE CHANGES (AF)			
Facility	Begin	End	Net
Deep basins	10,503	9,371	-1,132
Santiago Pits	13,277	11,887	-1,390
River			
Off-river			
Irvine Lake			
TOTAL	23,780	21,258	-2,522

SUMMARY (AF)	
TOTAL INFLOW	24,890
TOTAL LOSSES	515
STORAGE CHANGE	-2,522
CALC'D PERCOLATION	26,898

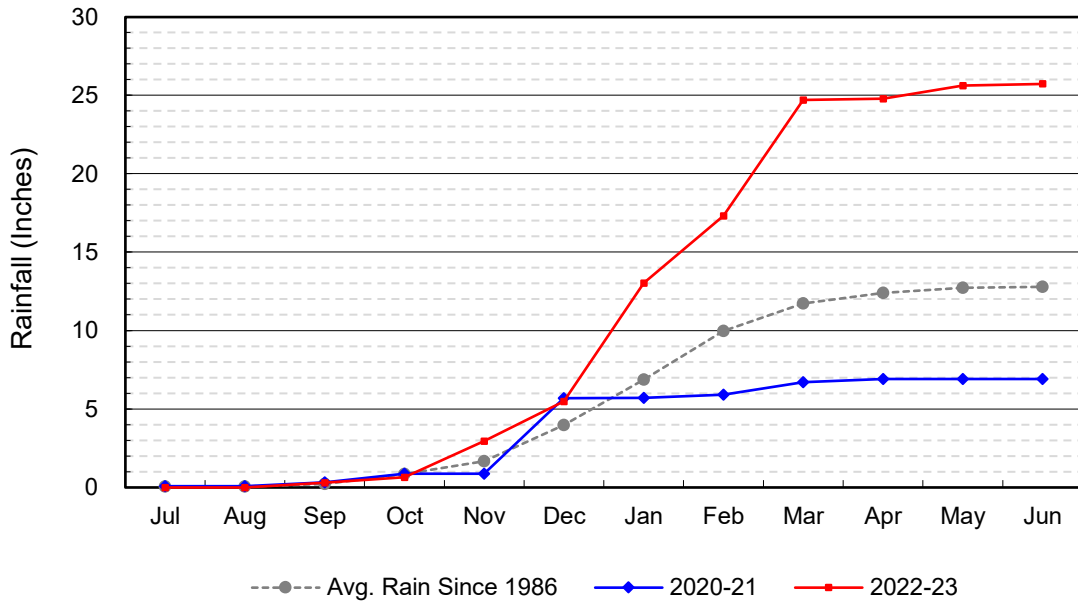
DEEP BASINS MONTHLY STATUS

June 2023

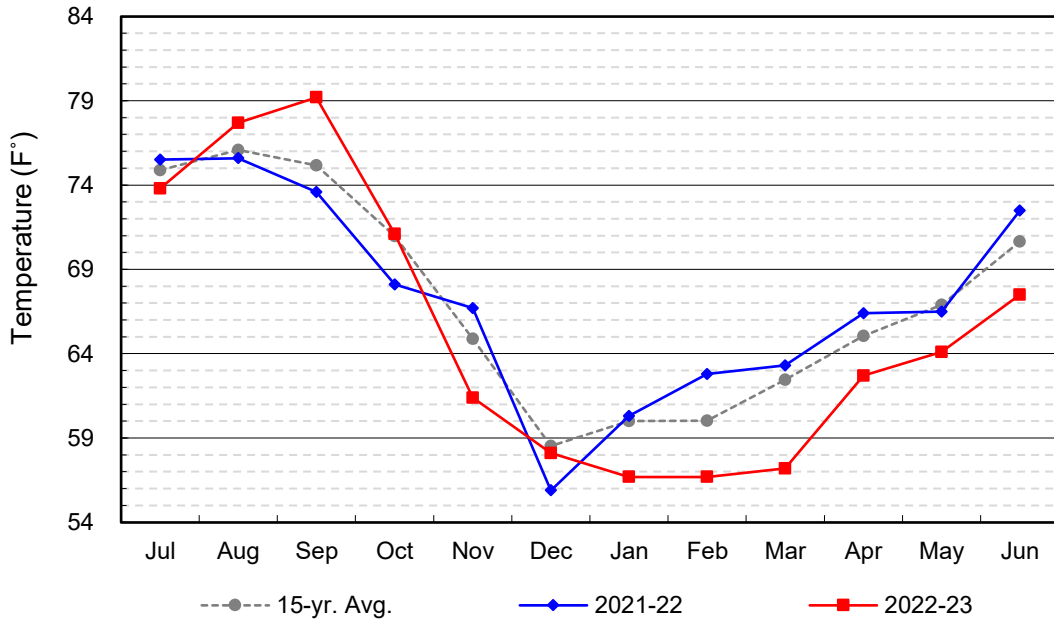
(values in acre-feet)

<i>Facility</i>	<i>Storage Start</i>	<i>Storage End</i>	<i>Maximum Storage</i>	<i>Total Perc</i>	<i>Max Perc</i>	<i>Avg Perc</i>	<i>Avg W.S. Elev</i>
Desilting Ponds	230	220	252	na	na	na	na
Fos-Huckleberry	541	533	628	na	na	na	na
Conrock Basin	564	549	661	na	na	na	na
Warner Basins	2,910	2,891	2,900	553	na	na	239
Olive Pit	91	44	95	na	na	na	221
Anaheim Lake	2,077	1,774	2,300	1,210	74	40	219
Mini-Anaheim Lk	0	0	10	368	46	12	221
Miller Basin	310	44	350	278	53	9	202
Kraemer Basin	1,062	684	1,055	1,087	48	36	215
La Palma Basin	24	94	101	5,295	209	176	218
Mira Loma	12	36	53	2,200	80	73	218
La Jolla Basin	6	4	20	412	40	14	200
Placentia Basin	0	0	200	na	na	na	na
Raymond Basin	5	5	200	254	na	na	na
Five Coves Basins	315	257	329	na	na	na	na
Burriss Pit	2,333	2,228	2,500	1,798	76	60	170
River View Basin	8	3	8	246	14	8	188
Fletcher Basin	15	5	15	94	5	3	189
Santiago (Bond)	8,313	7,591	8,312	5,495	220	183	284
Santiago (Blu Dia)	4,964	4,296	5,259	-	-	-	-
Totals	23,780	21,258	25,247	19,290			
Prado Dam	6,900	1	20,000				

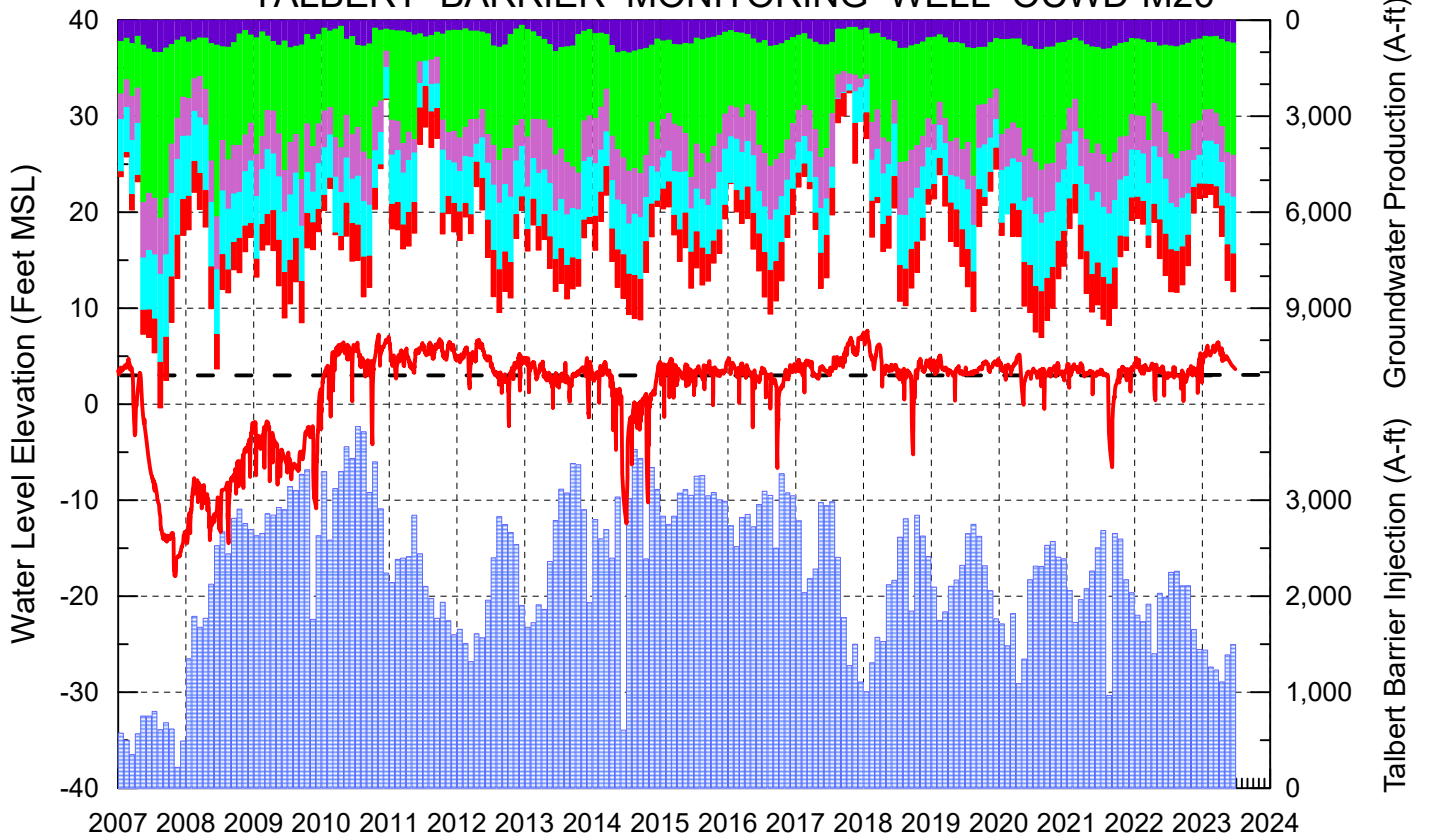
Cumulative Anaheim Field HQ Rainfall



Temperature at Santa Ana Fire Station



TALBERT BARRIER MONITORING WELL OCWD-M26



- Talbert/Lambda Aquifer Mergence Zone Perforated Interval: 71 - 135 ft. bgs
- ▨ Talbert Barrier Injection
- - - Protective Level to Prevent Seawater Intrusion
- ▨ Fountain Valley Groundwater Production
- ▨ IRWD Groundwater Production
- ▨ Mesa Water Groundwater Production
- ▨ Huntington Beach Groundwater Production
- ▨ Newport Beach Groundwater Production

