

# WATER RESOURCES SUMMARY

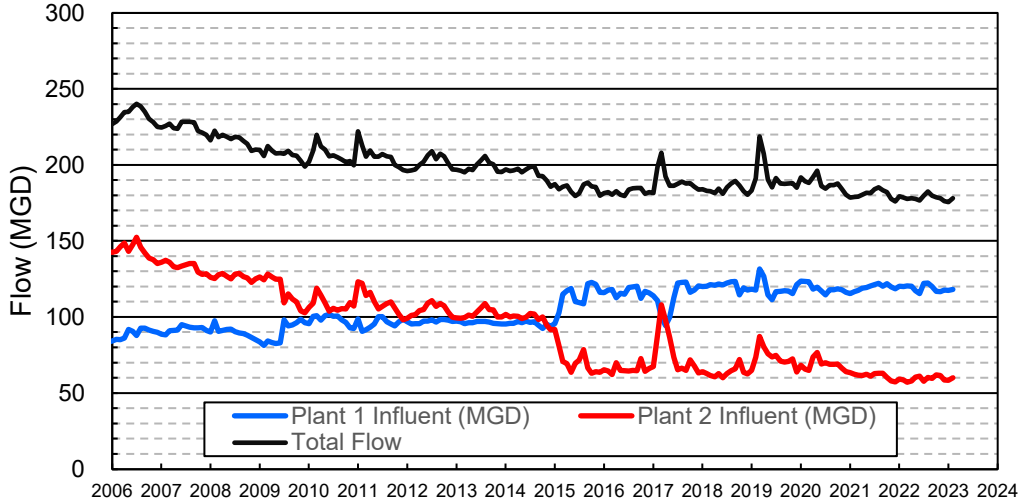
January 2023

INFLOWS & OUTFLOWS (acre-feet)	Total for Month	Year to Date - This Year    Last Year	
<b>BASIN SUPPLIES</b>			
Water Purchases from MWD (excludes In Lieu)	0	16,864	20,003
Water into MWD Storage Account (excludes In Lieu)	0	0	0
SAR & Santiago Creek Flows (accounts for storage to/from recharge facilities)	49,811	95,157	79,541
GWRS Water to Forebay	8,366	42,368	33,955
GWRS Water to Mid-Basin Injection Wells	595	4,526	4,614
GWRS Water to Talbert Barrier	1,440	13,265	14,911
OC-44 and F. Valley Water to Talbert Barrier	1	18	6
Alamitos Barrier Water	220	1,652	1,796
Incidental Recharge (estimated)	6,000	17,900	12,036
Evaporation from Recharge Basins	(210)	(1,542)	(1,452)
River Flow Lost to Ocean	<u>(30,604)</u>	<u>(30,998)</u>	<u>(16,269)</u>
Total Groundwater Recharge	35,620	159,209	149,140
<b>WATER PRODUCTION</b>			
Groundwater Production	16,614	143,817	150,752
MWD Storage Program Withdrawals	<u>0</u>	<u>0</u>	<u>0</u>
Total Groundwater Production	16,614	143,817	150,752
<b>BASIN BALANCE</b>			
Change in Groundwater Storage	19,006	15,392	(1,612)
Change in Groundwater Storage excluding MWD Stored Water	19,006	15,392	(1,612)
Accumulated Overdraft	-----	242,610	249,615
Accumulated Overdraft excluding MWD Storage	-----	242,610	249,615
<b>IN LIEU WATER</b>			
OCWD In Lieu Purchases (MWD Cyclic Storage)	0	0	0
MWD In Lieu Storage	<u>0</u>	<u>0</u>	<u>0</u>
Total In Lieu	0	0	0
<b>OTHER KEY INFORMATION</b>			
1. MWD Water Deliveries to Producers	4,401	63,295	72,596
2. Basin Production Percentage	79.1%	69.4%	67.5%
3. Total Water Demand	22,704	219,492	236,286
4. Total GWRS Production	10,402	60,204	53,512
5. Green Acres Project Water	30	2,154	2,189
6. SAR Water Quality			
- Total Dissolved Solids (TDS) of SAR below Prado Dam (ppm)	322	-----	374
- Total Nitrogen of SAR below Prado Dam (ppm)	1.6	-----	1.2
7. Month-End Water Storage Behind Prado Dam	14,709	-----	5
8. Month-End Water Storage in Recharge Facilities	22,787	-----	21,559
9. Water Storage Change in Recharge Facilities	9,020	11,911	12,899
10. Total Artificial Recharge	29,620	141,309	137,104
11. Monthly Mean Temperature at Santa Ana Fire Station (°F)	56.7	-----	60.3
12. Rainfall at FHQ (inches)	7.55	13.03	5.70

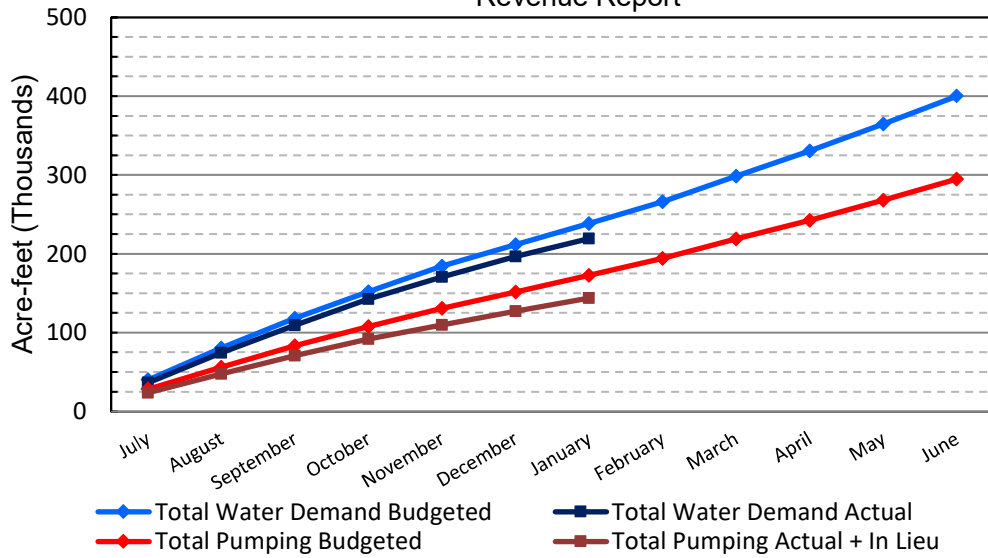
\*\*\* Note: Data are preliminary, subject to change

2/9/2023

### Orange County Sanitation District Influent Flows Report

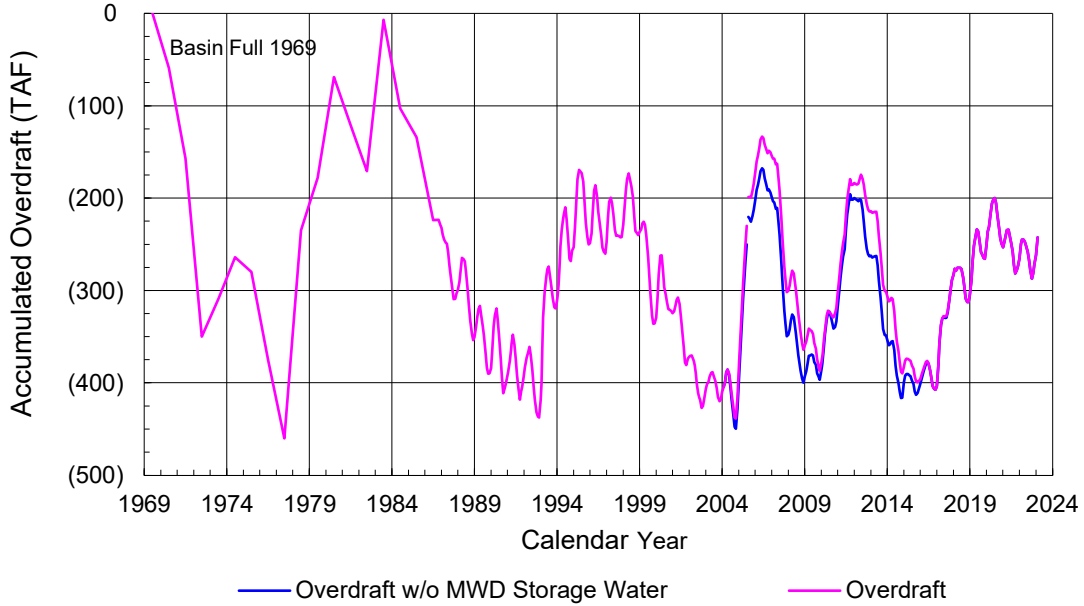


### 2022-23 Water Demands/Groundwater Pumping + In Lieu/RA Revenue Report

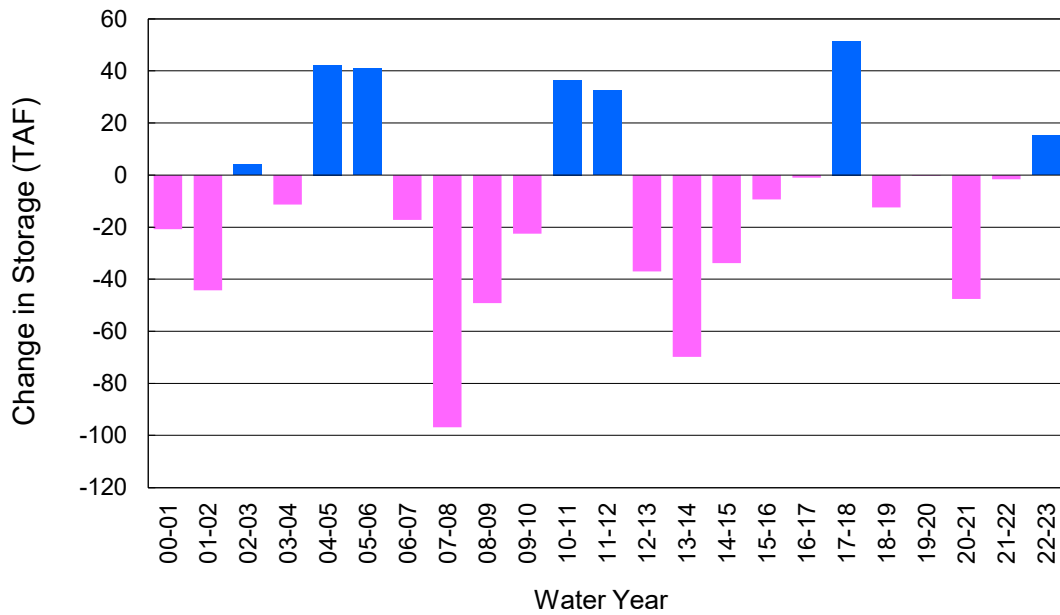


	Monthly		Accumulated Total for the Year			
	Budget	Actual	Budget	Actual	Difference	Percent
Total Water Demand	26,700	22,704	238,300	219,492	-18,808	92.11%
Total Pumping + In Lieu	21,100	16,614	172,800	143,817	-28,983	83.23%
RA Revenue	\$9,748,200	\$7,675,509	\$79,833,600	\$66,443,488	-\$13,390,112	83.23%

### Accumulated Overdraft



### YTD Change in Groundwater Storage in OCWD



## PRODUCERS WATER USAGE SUMMARY

**January 2023**

(AF except BPP)

WATER AGENCY	Ground-water (1)	In Lieu	Reclaimed Water	Total Import (2)	Total Demand	2022-23 YTD Demand	2021-22 YTD Demand	YTD % Diff Demand	JAN 2023 BPP	2022-23 YTD BPP	2021-22 YTD BPP
Anaheim	776	0	0	2,245	3,021	32,710	35,545	92%	25.7%	25.4%	30.1%
Buena Park	696	0	0	15	711	7,400	7,815	95%	97.9%	84.7%	82.8%
East Orange County	0	0	0	39	40	471	545	86%	0.5%	0.3%	0.3%
Fountain Valley	506	0	5	0	510	5,479	6,040	91%	100.0%	100.0%	100.0%
Fullerton	954	0	0	202	1,156	13,020	14,130	92%	82.5%	76.3%	75.7%
Garden Grove	1,336	0	0	0	1,336	12,214	13,107	93%	100.0%	70.3%	85.0%
Golden State	800	0	0	670	1,470	12,774	13,754	93%	54.4%	57.6%	62.2%
West OC System	800	-	-	120	920	7,757	8,324	93%	na	na	na
East OC System	0	-	-	550	550	5,017	5,430	92%	na	na	na
Huntington Beach	1,344	0	0	162	1,506	14,550	15,557	94%	89.2%	59.8%	84.1%
Irvine Ranch	3,145	0	1,672	2	4,819	37,274	39,225	95%	100.0%	99.6%	98.7%
DRWF Clear	1,800	-	-	-	1,800	16,291	16,762	97%	na	na	na
DRWF Color	700	-	-	-	700	4,935	4,058	122%	na	na	na
Laguna Beach	102	0	0	110	212	1,902	1,932	na	48.1%	17.7%	0.0%
La Palma	106	0	0	0	106	1,000	973	103%	100.0%	99.6%	93.7%
Mesa Water (MW)	977	0	6	0	983	9,597	10,253	94%	100.0%	99.9%	97.8%
MW Clear	962	-	-	-	962	6,893	7,678	90%	na	na	na
MW Amber	15	-	-	-	15	2,205	1,854	119%	na	na	na
Newport Beach	414	0	3	216	633	8,186	8,617	95%	65.8%	81.0%	75.4%
Orange	1,367	0	0	28	1,395	14,329	15,931	90%	98.0%	75.0%	51.3%
OCWD (GAP)	90	0	0	0	90	844	867	97%	100.0%	100.0%	100.0%
Santa Ana	1,705	0	3	404	2,112	18,719	19,551	96%	80.9%	66.1%	76.6%
Seal Beach	175	0	0	1	176	1,721	1,985	87%	99.7%	65.6%	70.7%
Serrano	0	0	0	93	93	1,493	1,681	89%	0.0%	63.0%	1.8%
Tustin	390	0	0	171	561	6,001	6,446	93%	69.5%	50.4%	57.3%
Westminster	680	0	0	0	680	5,973	6,413	93%	100.0%	96.3%	100.0%
Yorba Linda	<u>679</u>	<u>0</u>	<u>0</u>	<u>39</u>	<u>718</u>	<u>10,546</u>	<u>11,820</u>	<u>89%</u>	<u>94.6%</u>	<u>82.5%</u>	<u>8.4%</u>
SUBTOTAL:	16,243	0	1,689	4,396	22,328	216,203	232,187	93%	79.1%	69.4%	67.5%
Other Producers (Est ~3% of Subtotal)	<u>371</u>	<u>0</u>	<u>0</u>	<u>6</u>	<u>376</u>	<u>3,289</u>	<u>4,099</u>	<u>80%</u>			
<b>TOTAL:</b>	<b>16,614</b>	<b>0</b>	<b>1,689</b>	<b>4,401</b>	<b>22,704</b>	<b>219,492</b>	<b>236,286</b>		<b>79.1%</b>	<b>69.4%</b>	<b>67.5%</b>
OCWD (Talbert Barrier)	0		1,440	0	1,440	13,283	14,917				
OCSD (GAP)	na		13	na	13	542	376				

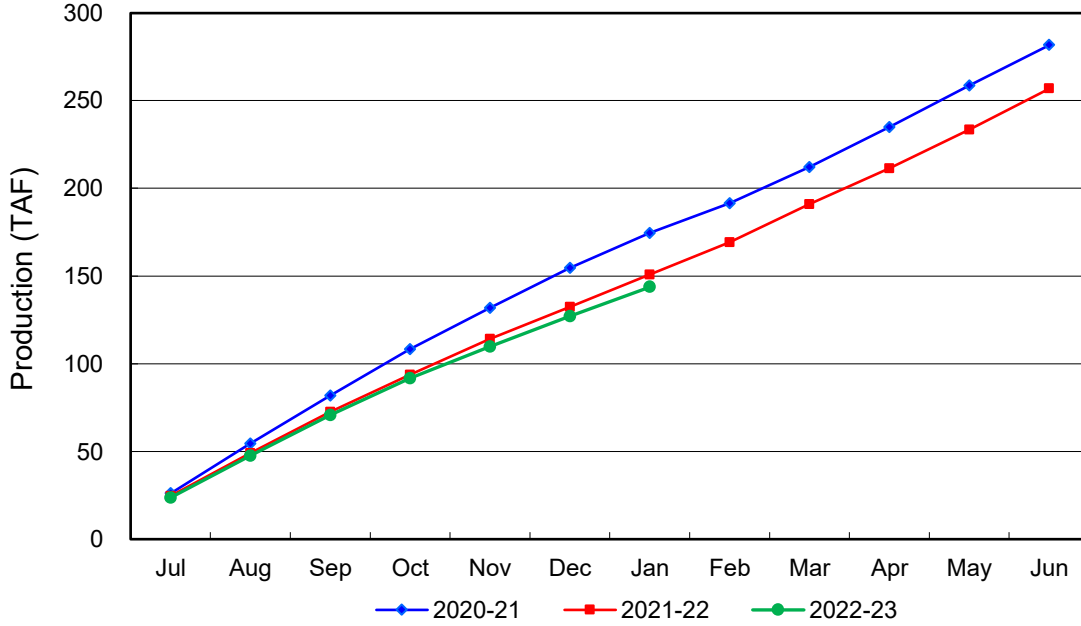
Estimated

(1) Excludes MWD CUP Withdrawals

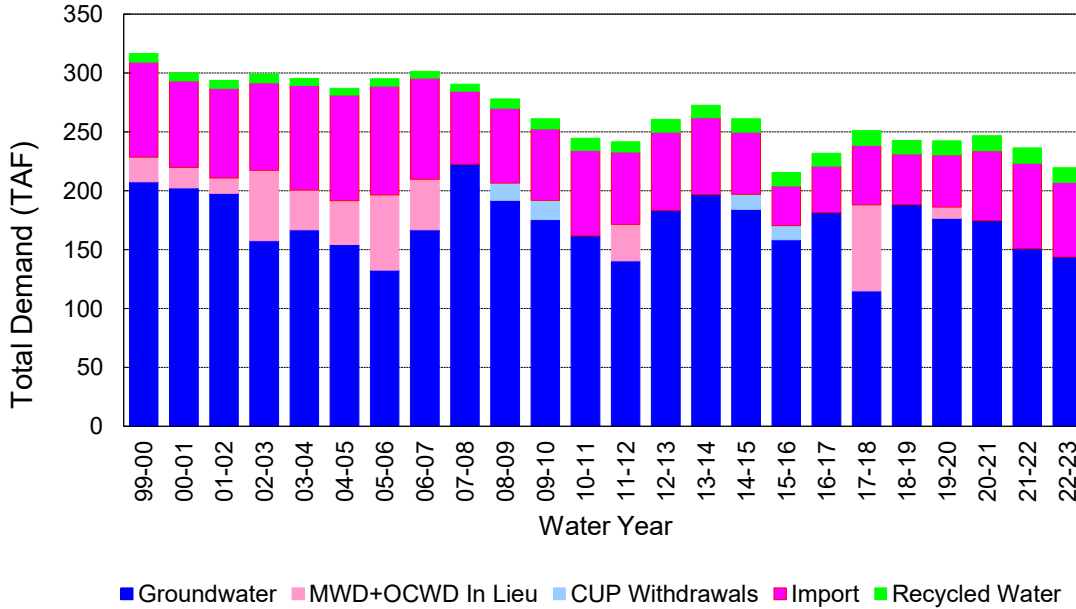
(2) Includes MWD CUP Withdrawals & In Lieu Water

2/9/2023 14:48

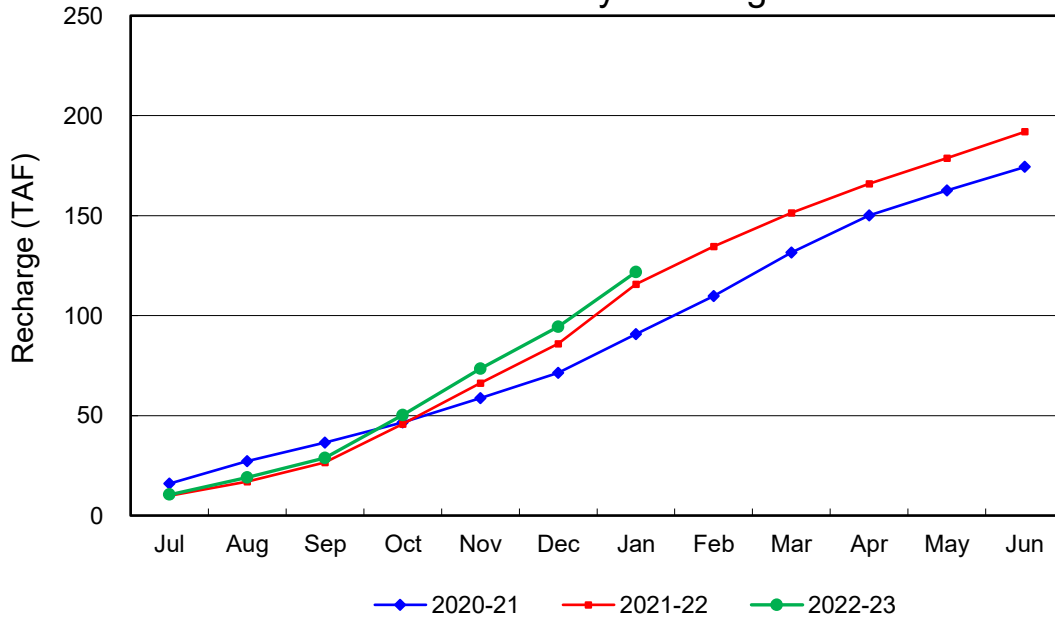
### Annual Groundwater Production



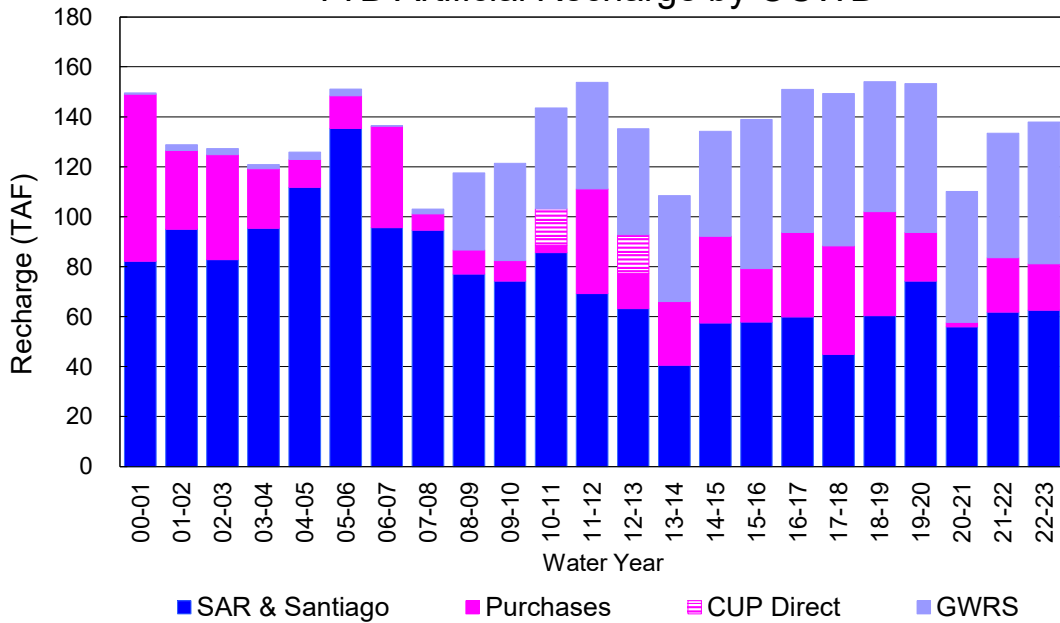
### YTD Total Demand in OCWD



### Annual Forebay Recharge



### YTD Artificial Recharge by OCWD



## RECHARGE AREAS REPORT

January 2023

	Percolation (AF)	Remarks
RIVER SYSTEM	5,004	81 cfs per day average perc
DESILTING SYSTEM	na	SAR
OFF-RIVER SYSTEM	2,089	SAR
WARNER SYSTEM	307	SAR
OLIVE BASIN	na	Passive System
ANAHEIM LAKE	2,122	SAR
MINI-ANA LAKE	na	0
MILLER BASIN	1,619	GWRS
KRAEMER BASIN	4,134	SAR/GWRS
LA PALMA BASIN	3,840	GWRS
MIRA LOMA	631	GWRS
LA JOLLA BASIN	221	SAR
PLACENTIA BASIN	na	0
RAYMOND BASIN	-	0
FIVE COVES BASIN	na	SAR
BURRIS BASIN	1,925	SAR
RIVER VIEW BASIN	116	SAR
FLETCHER BASIN	95	SAR/Local Runoff
SANTIAGO BASINS	5,086	SAR/Local Runoff
SANTIAGO CREEK	178	SAR
<b>TOTALS</b>	<b>27,367</b>	
<b>5-YR AVERAGE</b>	<b>26,545</b>	

FLOWS TO RECHARGE AREAS (AF)	
Imperial Headgates (estimated)	54,355
GWRS	8,369
OC-28 (MWD)	0
OC-28a (MWD)	0
OC-59	0
Est'd local Forebay inflow below Imperial	1,995
Est'd local Santiago inflow (estimated)	1,855
Irvine lake releases (OC-13 MWD)	75
Villa Park Dam releases (estimated)	0
Precip at Warner Basin (inches)	7.55
Precip direct to open water surfaces	551
<b>TOTAL INFLOW</b>	<b>67,200</b>

LOSSES FROM RECHARGE AREAS (AF)	
Est'd SAR flow past Chapman Ave.	30,000
Est'd Santiago Cr. flow to SAR	604
Est'd flows past Raymond Basin	0
Calc'd evap (inches) Estimated	2.87
Est'd evaporative losses	210
<b>TOTAL LOSSES</b>	<b>30,814</b>

STORAGE CHANGES (AF)			
Facility	Begin	End	Net
Deep basins	8,965	9,658	693
Santiago Pits	4,802	13,129	8,327
River			
Off-river			
Irvine Lake			
<b>TOTAL</b>	<b>13,767</b>	<b>22,787</b>	<b>9,020</b>

SUMMARY (AF)	
TOTAL INFLOW	67,200
TOTAL LOSSES	30,814
STORAGE CHANGE	9,020
CALC'D PERCOLATION	27,367

## DEEP BASINS MONTHLY STATUS

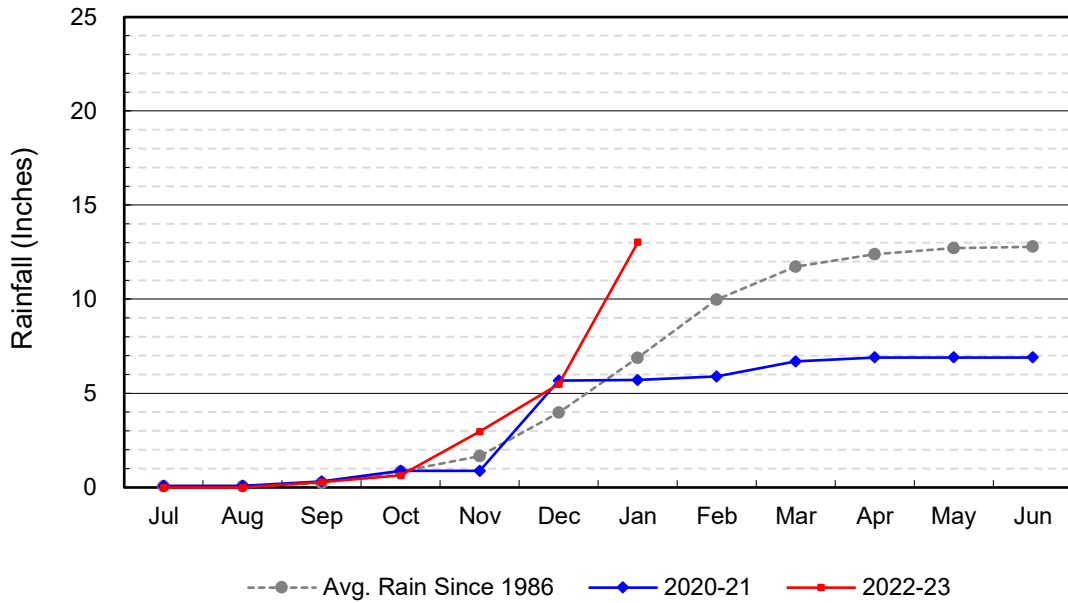
**January 2023**

(values in acre-feet)

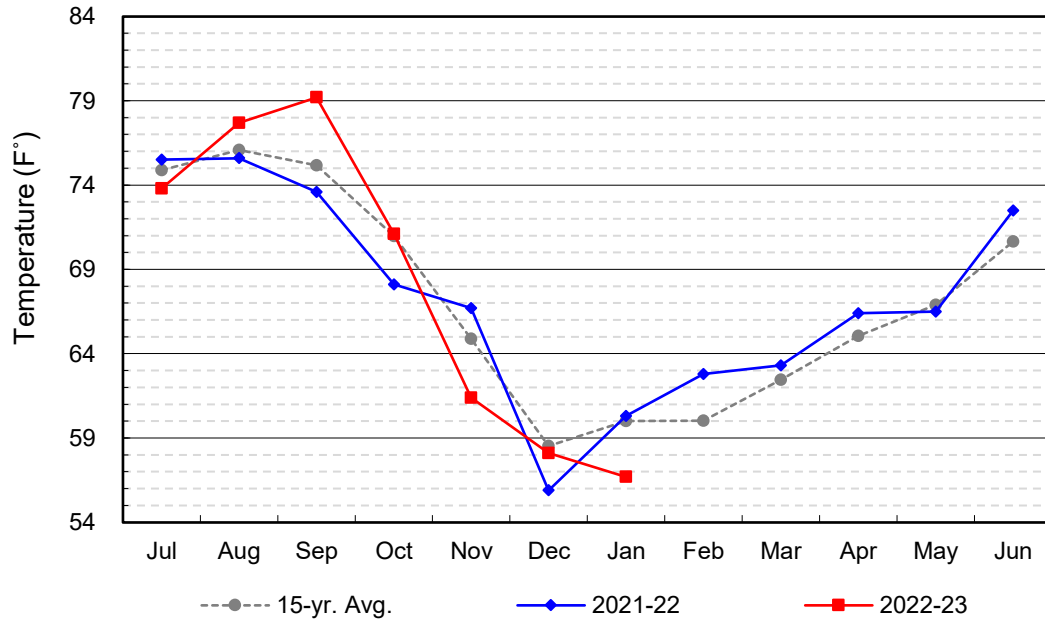
<i>Facility</i>	<i>Storage Start</i>	<i>Storage End</i>	<i>Maximum Storage</i>	<i>Total Perc</i>	<i>Max Perc</i>	<i>Avg Perc</i>	<i>Avg W.S. Elev</i>
Desilting Ponds	230	230	252	na	na	na	na
Fos-Huckleberry	570	553	628	na	na	na	na
Conrock Basin	582	590	661	na	na	na	na
Warner Basins	2,871	2,870	2,900	307	na	na	238
Olive Pit	50	81	95	na	na	na	217
Anaheim Lake	1,375	1,580	2,300	2,122	118	68	211
Mini-Anaheim Lk	0	0	10	na	na	na	na
Miller Basin	101	201	350	1,619	109	58	210
Kraemer Basin	879	995	1,055	4,134	161	133	213
La Palma Basin	97	94	101	3,840	142	124	219
Mira Loma	39	30	53	631	24	20	219
La Jolla Basin	2	11	20	221	20	7	201
Placentia Basin	0	0	200	na	na	na	na
Raymond Basin	0	0	200	-	na	na	na
Five Coves Basins	316	311	329	na	na	na	na
Burriss Pit	1,833	2,101	2,500	1,925	89	62	166
River View Basin	2	8	8	116	13	4	187
Fletcher Basin	18	3	15	95	10	3	188
Santiago (Bond)	3,516	8,105	8,312	5,086	269	164	262
Santiago (Blu Dia)	1,286	5,024	5,259	-	-	-	-
<b>Totals</b>	<b>13,767</b>	<b>22,787</b>	<b>25,247</b>	<b>20,096</b>			
Prado Dam	681	14,709	20,000				



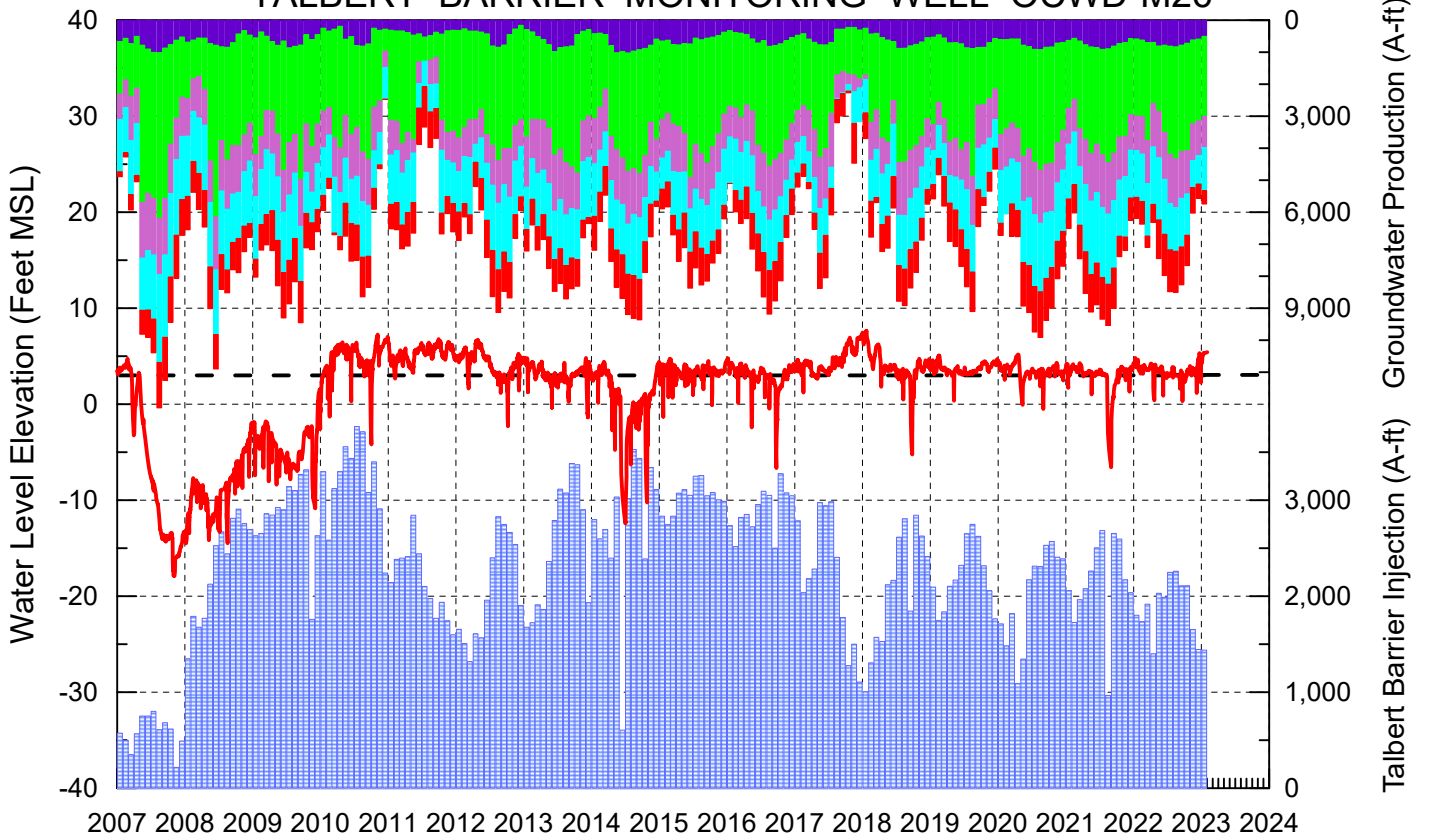
### Cumulative Anaheim Field HQ Rainfall



### Temperature at Santa Ana Fire Station



# TALBERT BARRIER MONITORING WELL OCWD-M26



- Talbert/Lambda Aquifer Mergence Zone Perforated Interval: 71 - 135 ft. bgs
- ▨ Talbert Barrier Injection
- - - Protective Level to Prevent Seawater Intrusion
- ▨ Fountain Valley Groundwater Production
- ▨ IRWD Groundwater Production
- ▨ Mesa Water Groundwater Production
- ▨ Huntington Beach Groundwater Production
- ▨ Newport Beach Groundwater Production

